

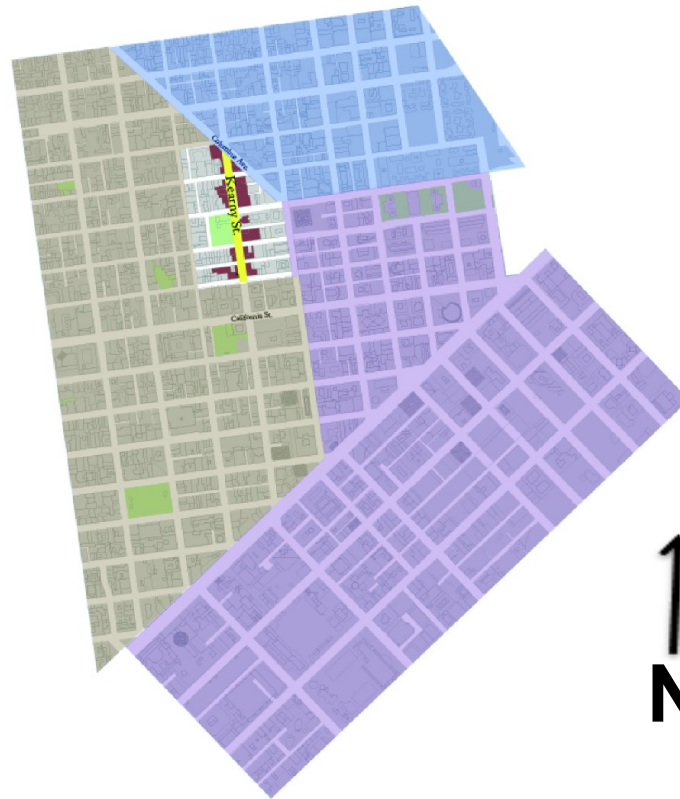
Kearny Corridor: Remember and Reclaim

Chinatown Urban Institute 2012

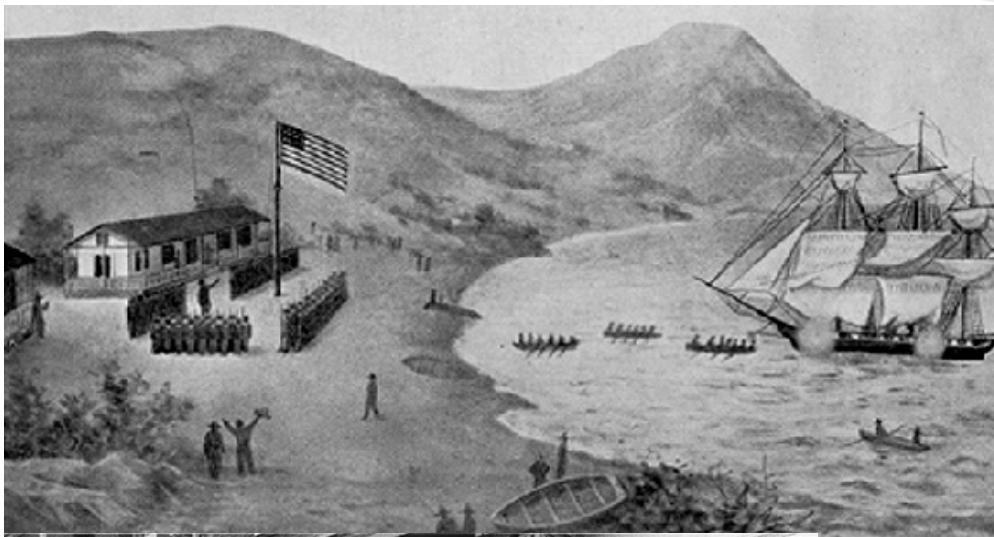
Wendy Chen, Sandy Jiang, Wisely Wang, Tracy Zhu

Introduction

- Kearny is a major artery at the intersection



Kearny: Place of Many Births



Sources:

Yerba Buena Cove: FoundSF.org

1906 Hall of Justice: *San Francisco: A Natural History*, Images of America 2006.

International Hotel protest: © Barney Peterson/San Francisco Chronicle/Corbis

Methodology & Stakeholders

- CCDC pedestrian and safety studies
- Merchant and resident interviews
- Focus group with CDC's Grassroots Leadership Training participants
- Traffic count of cars at Kearny and Clay
- Planning Department maps
- Comparative studies

Our Values

1. Livable Streets and Neighborhood
2. Strength in Economic Diversity
3. Art is Activism
4. Environmental Justice

Existing Conditions

1. Zoning and Housing
2. Open Space and Art
3. Streets and Transit
4. Businesses

Zoning



Existing Conditions



Chinatown Mixed Use Districts

	CRNC	Residential/Neighborhood Commercial
	CVR	Visitor Retail
	CCB	Community Business

Commercial Districts

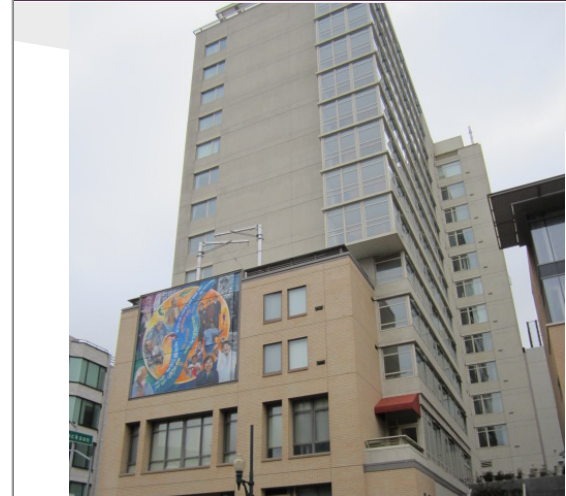
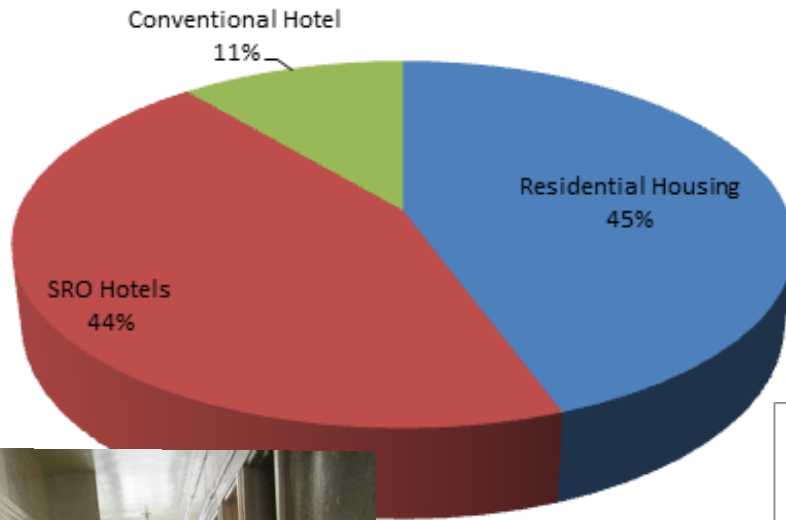
	C-3-O	Downtown Office
	P	Public

Source: SF Planning Department

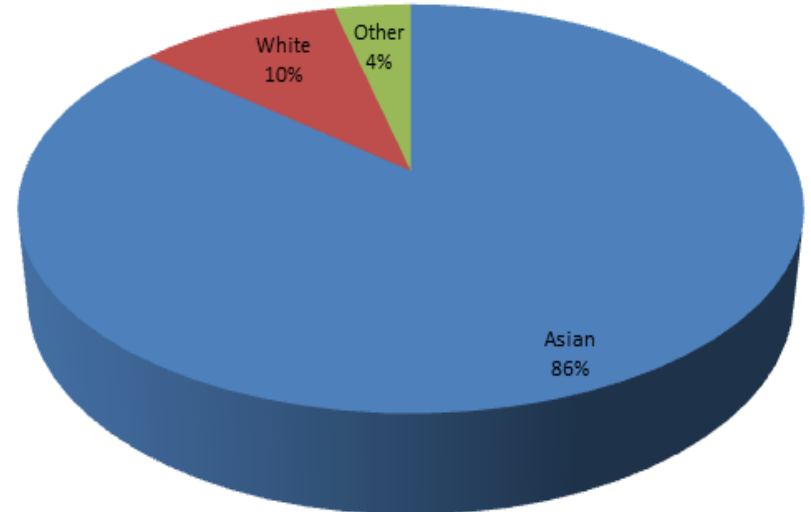
Housing

Existing Conditions

Types of Housing



2010 Census Data



Open Space and Art

Existing Conditions

Picture of Portsmouth Square (left)

Source: userwww.sfsu.edu, Steve Bowles, 2006



Photo by Steve Bowles - Dec. 2006



Open Space and Art

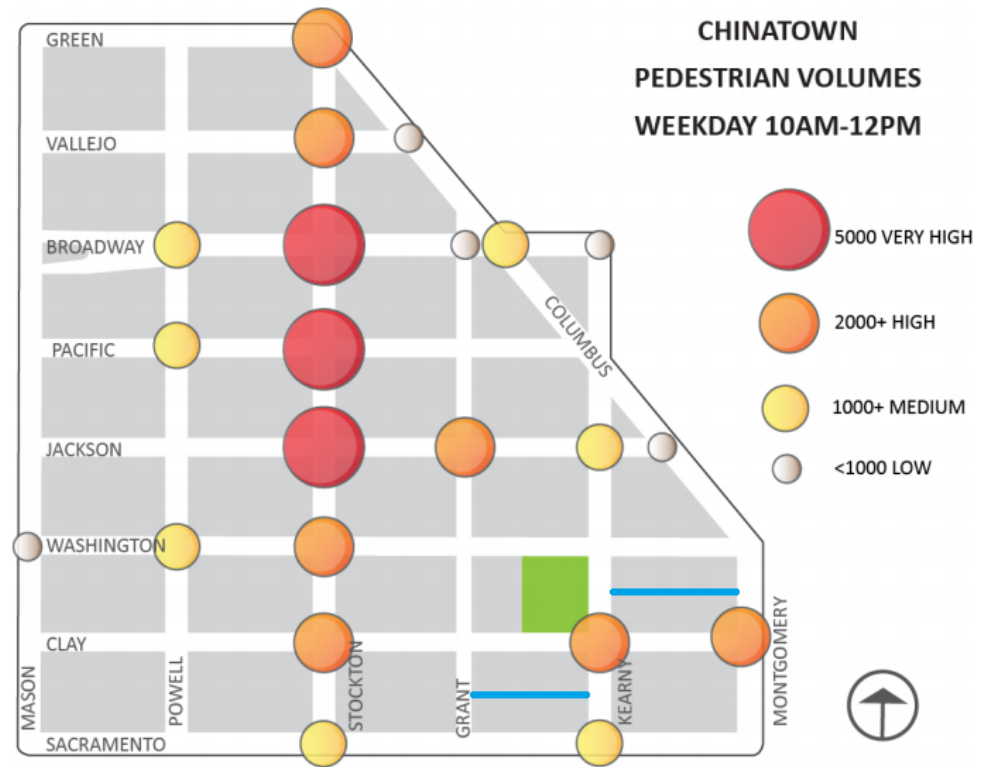


Transportation

Existing Conditions



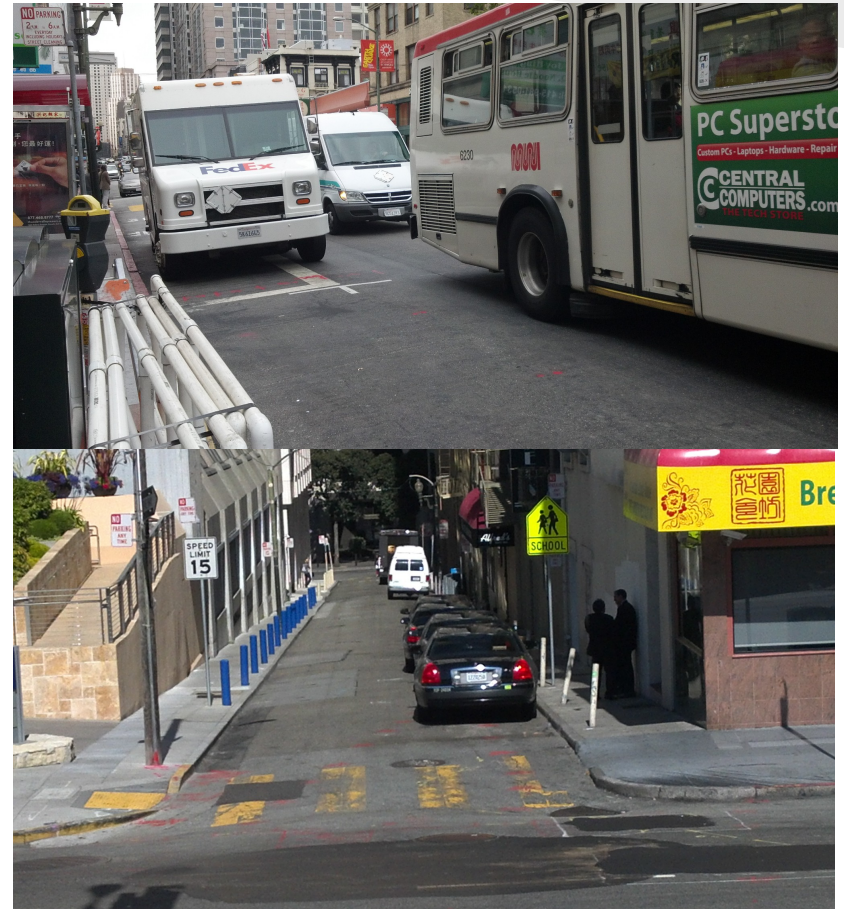
Weekday (Tuesday, Wednesday, or Thursday) from 10AM-Noon



Source: Chinatown CDC's "Chinatown Pedestrian Needs Assessment"

Transportation

Kearny between Clay and Merchant Alley



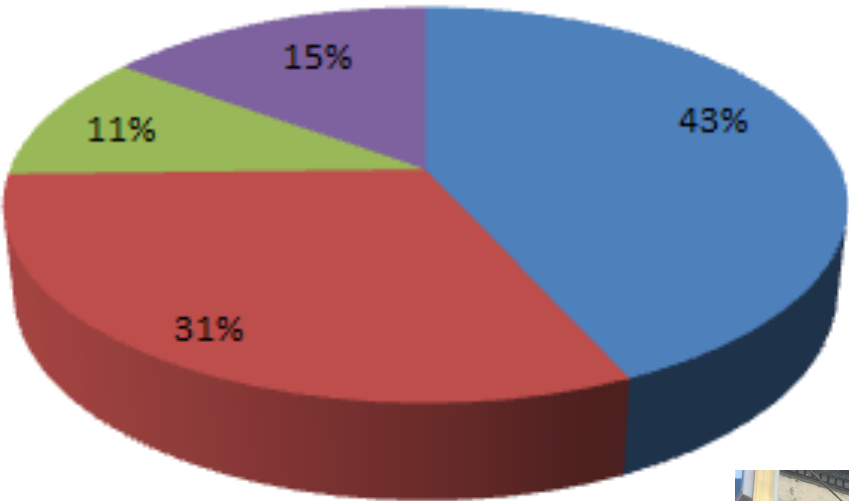
Merchant Alley

Businesses: Commercial Corridor



Total Number of Businesses

■ Retail ■ Service ■ Institution ■ Vacant



ONE STOP Career Link Center
 CAREER LINK CENTERS SAN FRANCISCO
 A Partnership for Employment 華埠一站式就業中心

Hours of Operation 營業時間：
 Monday – Friday 星期一至星期五
 9:00 AM – 5:00 PM 上午九時至下午五時

601 Jackson Street, San Francisco, CA 94133

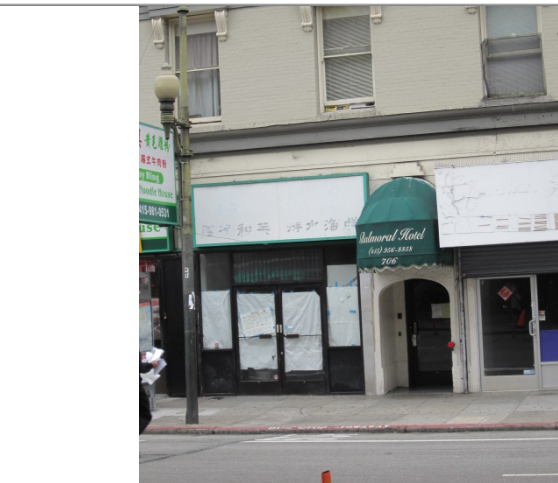
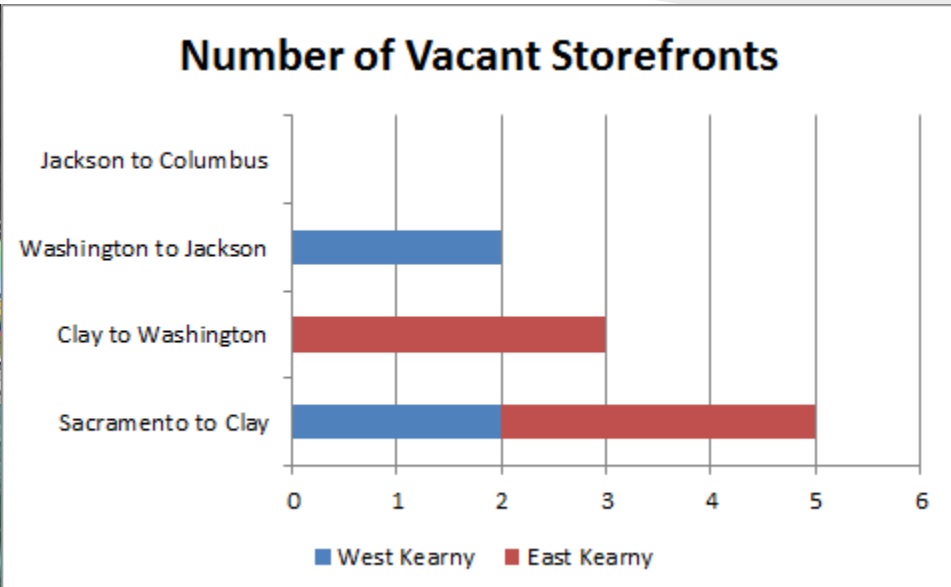


Businesses: Inventory & Interviews

Challenges

- Cleanliness and conditions of streets
- Not enough/expensive parking
- Increasing rents/vacant storefronts
- Hopes for more business during recession:
 - CCSF, tourists, nightlife, diversity of businesses

Businesses: Vacancies



Recommendations

- Guided by our values
- Steps and challenges for implementation
- Balancing the interests of various stakeholders and identification of partners for implementation

1. Portsmouth Square

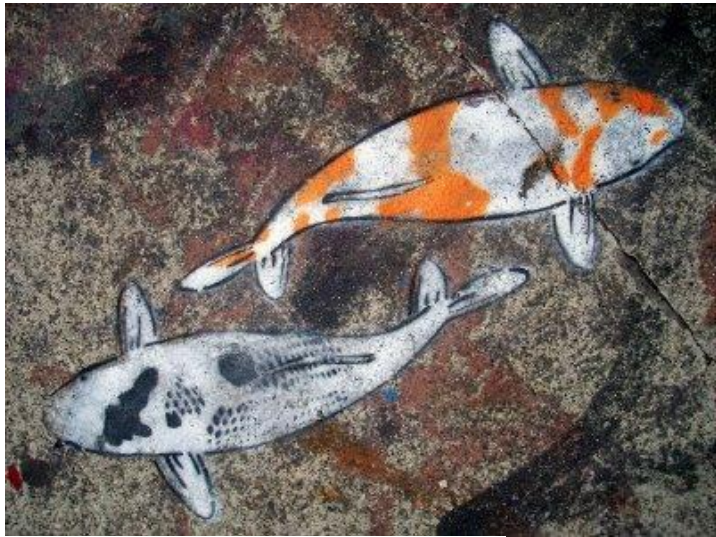


1. Portsmouth Square

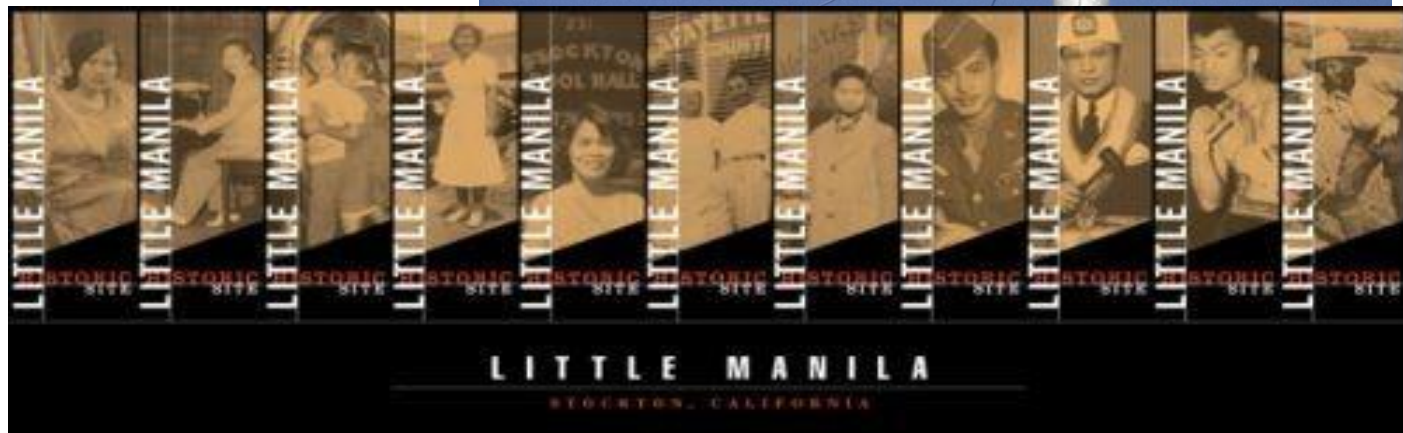
Picture of New York Highline.
Source: About.com Manhattan, NY



2. Public Art



Little Manila banners: Little Manila Foundation
3rd St. Banners: Bayview Merchants Association



3. Merchant Alley



Merchant Alley



Waverly Alley

4. Safety for Walkable Neighborhood

For all damaged corners



For Kearny and Clay



Picture of Oakland Chinatown's Scramble System
Source: SF Streets Blog

5. Support Existing Businesses

- Chinatown specific tour map
 - Chinese Cultural Center,
 - Sing Tao newspaper
 - Relationship with Visitor's Bureau & SF Tour Guide Guild
- Pilot evening festival e.g. CCDC's Noodlefest 2011, Art in Alleyways
 - Kearny Street Workshop's Dumpling Wars
 - Lower Polk/Haight Art Walk



Source: Frank Chan's Flickr



6. Ease Parking Concerns

\$3 All Day Parking @ Golden Gate Parking Lot

- Conduct outreach to frequent visitors from SF and tourists
 - Chinatown churches, Buddhist temple, Chinatown YMCA, Chinese Historical Society, NEMS, Chinese Hospital, Chinatown Community Convener
 - Neighborhood newspapers and blogs of Portola, District 10, Richmond, Sunset, Ingleside, Excelsior, Visitacion Valley, and other neighborhoods with large Chinese/Asian populations
 - Visitors' Bureau, SF Tour Guide Guild

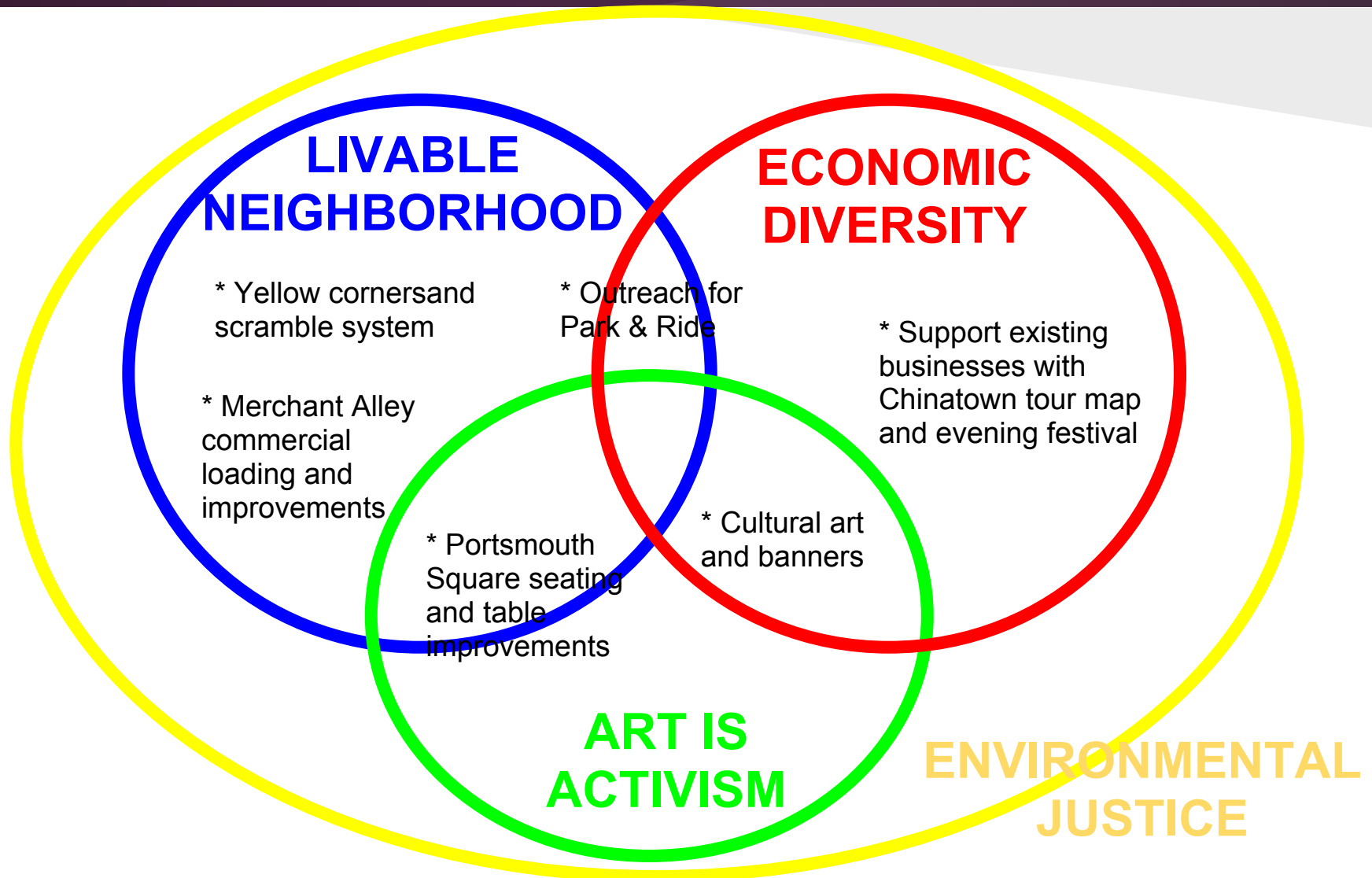


Areas for Future Study

- Transit study after CCSF opens
- Empire Park (POPOS)
- Conditions of vacancies
- Needs assessment for businesses

Parklet or seating in front of CCSF/
St. Mary's?

Remember and Reclaim



Appreciations

- *Chinatown CDC
- *SFMTA
- *SF Planning Commission & Dept
- *Bicycle Coalition
- *Chinatown YMCA
- *SF Park and Rec
- *Linda Ly and Allen Lu
- *Deland Chan and Angelina Yu



Banksy painting on Commercial and Grant

Q & A? Thank you for coming!



Courtesy of Manilatown Heritage Center